



Pat Sayers



Martin X

Adult community learning consultation

On 16 November 2010 the Government published two documents which set out a radical new strategy for further education and skills, *Skills for Sustainable Growth* and *Investing in Skills for Sustainable Growth*.

New Challenges, New Chances is a new document that sets out recommendations to take this strategy a stage further by making detailed proposals in areas ranging from informal adult and community learning to data requirements on colleges.

There is one overall consultation and two more detailed consultations focusing on Further Education loans and informal adult and community learning.

All consultations close on Friday 21 October 2011. It is important that BIS hear your views and it would help us if you could get them in as soon as possible and not wait until the end date of 21 October. BIS intends to publish the next stage in the late autumn.

www.bis.gov.uk/newchallenges



NIACE survey on informal adult community learning

Learners and other members of the public are being given a unique opportunity to have their say about the future of informal adult community learning, by responding to a new **NIACE** survey online.

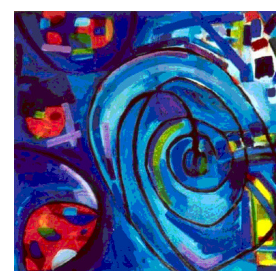
The NIACE survey is sponsored by the Department for Business, Innovation and Skills (BIS) as part of its review of Informal Adult Learning. The survey is aimed at learners and those not currently learning. BIS will be launching a broader consultation aimed at organisations, such as education providers and employers, later in August.

This is a real opportunity for individuals to influence policy regarding the future of informal adult community learning and we urge learning providers and others in the sector to encourage and support people to access and complete the survey. NIACE is hoping for a huge response to once again demonstrate how much people value informal adult learning. This is the 'Big Society' in action.

Increasingly public consultations are being held online and this is an ideal opportunity for the sector to support people to engage with this method of consultation. To do this NIACE has worked with an advisory group to develop support materials for learning champions and other intermediaries to help people complete the survey. The materials are available on the website.

Deadline: 31st October 2011

www.niace.org.uk/current-work/the-iacl-review



Sara Rivers

Inside this issue:

Adult community learning consultation	1
NIACE survey on informal adult community learning	1
EPIC Tip to help filming and editing video	2
Send <i>Trustees Week</i> Your story	2
Creative Islington- Sept Newsletter	2
"WeDidThis" Micro philanthropy campaign	2
The Bethlem Gallery Eternal Maternal	3
Honda: Made In Britain competition	3
Big Society Bank launches	3
Candid Arts Sept Newsletter	4,5
Pallant House launches "Outside In" competition	6,7
The Museum of Everything Exhibition #4	8, 9
Details of the 2x2 Forum for Outsider Art in October	10

EPIC Tip to help filming and editing video

It seems as though video is everywhere nowadays! Even ten years ago, it was hard for amateur groups and individuals to make their own videos as the equipment was so expensive.

Now, you can shoot video on mobile phones and most digital cameras as well as camcorders so pretty much anyone can have access to video recording equipment. This presents a great opportunity for your amateur arts and crafts group to record your work and let the world see it!

As part of its Epic Tips section, the Epic Awards

website is featuring some hints on how to approach the video making process.

Read more at <http://blog.epicawards.co.uk/2011/09/epic-tip-22-filming-and-editing-video/>.

The **Voluntary Arts Epic Awards 2011** will shine a spotlight on the excellent work of voluntary and amateur arts groups throughout the UK and Ireland. So what are you waiting for? Download an entry form today from <http://epicawards.co.uk/how-to-enter>.



Send Trustees Week your story

The organisers of **Trustees Week (31st October—6th November)** are collecting inspiring stories of individual trustees' experiences to help attract new people to becoming trustees. It's a great chance to raise awareness of your organisation's work. Find out how to take part and submit your story at www.trusteesweek.org.uk.



Creative Islington NEWSLETTER September 2011

Introducing Creative Islington's latest newsletter!

This newsletter is jam-packed with **local arts events, funding and opportunities**. The newsletter is not published in full here, to read and find out about our upcoming autumn events and to make sure you are in the loop with all our activities see:- www.creativeislington.com

Be part of Islington's thriving creative network! sign up at and [follow us on twitter @creat_islington](#)

News and networking events month include:-

[Black History Month Networking Event at the Kesidee](#)

[Finsbury Park Networking event with The Park](#)

[Theatre and John Jones](#)

[Creative Islington Advisory Board Network](#)

MEMBERS' EVENTS

['The Big Splash' Big Draw 2011 National Launch in Islington at Kings Place](#)

[Creative Arts Networking Evening at Jurys Inn Islington Hotel](#)

For more events:- www.creativeislington.com/events

For more funding:- www.creativeislington.com/opportunities

For more jobs:- <http://www.creativeislington.com/jobs>

WeDidThis campaign to support micro-philanthropy

WeDidThis, the crowd funding website for the arts, has launched its Crowds for Culture campaign.

The campaign hopes to increase the public voice and participation, in the arts funding ecology.

WeDidThis co-founder and site creator, Hen Norton has written to Arts Council England to consider three ways it could give micro-philanthropist a greater say in the commissioning and funding of the UK arts, to make the sector stronger and more resilient.

A summary of the letter is available at:-

<http://wedidthis.org.uk/2011/07/26/crowds-culture-new-discussion>

with a full copy posted at www.facebook.com/pages/Crowds-for-Culture/234158976616176

For more information, like 'Crowds for Culture' on Facebook or contact Hen at projects@wedidthis.org.uk.

source: National Campaign for the Arts



The Bethlem Gallery presents:- *Eternal Maternal*



Eternal Maternal

The Bethlem Gallery invites you to an exhibition of paintings, drawings, sculpture and photography exploring the theme of motherhood to mark the 30th anniversary of the Perinatal Unit at Bethlem Royal Hospital.

Honda: Made in Britain

Each month Honda will be awarding a £100 grant to the best Made In Britain creation it receives through its Facebook app.

Whatever the skill, if you created it with your own hands in the UK then it counts – see the Facebook galleries for inspiration. And you could put your winnings towards buying a course of evening classes to perfect your skills, a set of new materials to expand

Big Society Bank Launched

The Cabinet Office Minister Francis Maude has announced the official launch of the Big Society Bank. Supporting the Big Society messages, the Big Society Bank will fund the creation of a social investment market, ensuring a greater number of groups are able to access funding for the social goods they deliver.

The announcement included details about the select group of board members, which included, Dawn Aust-

Experiencing mental health problems during motherhood, or as a result of it, can still invoke stifling social taboos and stigmas. The artworks on display have been made by artists, past and present, who have used the services of South London and Maudsley NHS Foundation Trust. Among the large-scale oil paintings and intimate sketches, the exhibition also features photography by patients from the Perinatal Unit, who have used the medium as a therapeutic tool.

Opening: 31st August 2011, 3 - 6pm

Exhibition Continues: 1st Sept—23rd September

Wednesday - Friday 11am - 6pm

Free Entry - All Welcome!

Address: Bethlem Royal Hospital | Monks Orchard Road | Beckenham | Kent | BR3 3BX

Travel: Nearest British Rail: Eden Park / East Croydon

Contact: Beth Elliott, Gallery Co-ordinator, 020 3228 4835

Email: thebethlemgallery@gmail.com

Website: www.bethlemgallery.com

***The Christening by Arfika.**

your creations, or a new website to showcase your wares.

So, simply visit www.facebook.com/hondamadeinbritain?sk=app_4949752878

and 'like' the page, and then use the app to upload photos of your eye-catching creations – Honda's independent judges are looking for entries that are bursting



wick CEO of Esmee Fairbairn Foundation and Geoff Mulgan from NESTA. Furthermore, the launch announced a second Board of the Big Society Trust, responsible for ensuring that the group remains focused on its mission, and includes Sir Stephen Bubb of ACEVO.

www.cabinetoffice.gov.uk/news/big-society-bank-launched

Candid Arts Newsletter—September 2011



PHOTOGRAPHY EXHIBITION

02 - 11 September

Candid Arts
3 Torrains St. London (Angel)

Image by Ruso Bochorishvili

PHOTOGRAPHY EXHIBITION

Curated by Candid Arts

2nd - 11th September 2011

Exhibition open daily 12-6pm FREE ADMISSION

Featuring new work by:

Alma Haser, Emma Walker, Geoff Bartholomew, Hannah O' Hara, John Maher, Kayung Lai, Khyle Henderson, Kyle Zeto, Louisa Maxwell, Norma Walton, Oliver Watson, Olly Clarke, Rebecca Hallett, Rocio Pe Efe, Ruso Bochorishvili and Tamzin Plummer.

Upcoming Events

15th -19th September

Middlesex University - MA Fine Art Show

(Private View: Wednesday 14 September 6-9pm)

21st -25th September

FORMOSA SHOW 100 - Taiwanese Design

Private view: 21st September (6-9pm)

The London based Taiwanese design exhibition, **FORMOSA SHOW 100**, along with the creative markets, aims to appeal to the ambitious and talented emerging Taiwanese designers.

7th -30th October

THE ISLINGTON CONTEMPORARY ART & DESIGN FAIR 2011

Four Weekends, Four Shows, Free Admission

The Islington Contemporary Art & Design Fair is an established showcase for Artists and Designers to promote and sell their work, each of the four weeks covering specific disciplines. The fair provides a platform for over 200 individual artists across the entire art and design spectrum to show their latest work.

ISLINGTON CONTEMPORARY ART & DESIGN FAIR



Candid Arts Newsletter—September 2011 (Cont.)

With its dynamic mix of both emerging young artists and those with established reputations, the ICADF is a unique event. Whether you are an experienced buyer or an aspiring collector, the ICADF provides the ideal opportunity to buy directly from these innovative artists and designers. At Candid Galleries, visitors can enjoy exciting new art and design in one of the largest contemporary art spaces in London.

Week One

07th- 09th October:

Painting, Sculpture, Time Based Media

Preview evening: Thursday 06 Oct (6.30-9pm)

Week Two

14th-16th October:

Photography, Illustration, Graphics, Printmaking

Preview evening: Thursday 13 Oct (6.30-9pm)

Week Three

21st-23rd October: Fashion, Textiles, Jewellery

Preview evening: Thursday 20 Oct (6.30-9pm)

Week Four

28-30 October:

Design Products, Furniture, Ceramics, Glass

Preview evening: Thursday 27 Oct (6.30-9pm)

PLAYBACK SOUTH

Playback South public shows are on the first Wednesday of every month at Candid Cafe.

8pm

Tickets for all shows £8 (£5 conc) on the door.

Playback is the theatre of the unexpected. It takes the audience on a journey through each others' hearts and minds. Surprising stories spring into magical life, words are made flesh and the everyday brings forth epics.

More information at playbacksouth.org



Candid Arts Trust
3 Torrens St, London,
EC1V 1NQ
020 7837 4237

office@candidarts.com

Registered Charity No
1051672

Candid Cafe

We are pleased to announce that our courtyard cafe is now open.

Opening hours:

Mon - Sat: 12pm-10pm

Sun: 12pm-5pm



Gallery Hire

If you are interested in hiring spaces at Candid Arts Trust for exhibitions, conferences, receptions, parties, filming, photo-shoots or rehearsals please email:-

office@candidarts.com

or call 020 7837 4237



Life Drawing Classes

New dates for our popular life drawing and painting classes.



Life Drawing Saturdays

3rd Sept & 5th Nov

11am - 5pm | £45

All materials included

Life Painting Saturdays

8th Oct & 17th Dec

10am - 6pm | £50

All materials included

Still Life Painting

Saturday

29th Oct

11am - 5pm £45 |

All materials included

Intuitive Drawing &

Painting Saturday

*NEW CLASS

15th Oct & 19th Nov

11am - 5pm £50 |

All materials included

Intuitive Drawing and Painting is designed to encourage creative freedom and to allow intuition to guide your art. Suitable for all levels.

*Advance booking for all Saturday Classes is essential.

Life Drawing Drop In Daytime & Evening-Classes

Run continuously all year-

(Day) Every Tues & Weds

11am-1pm

(Eve) Every Monday, Tuesday, Wednesday and Thursday except bank holidays

7pm - 9pm

All drop in classes £7
Materials available to buy
No need to book

*Classes do get very busy-arrive in good time.

Life Drawing Vouchers can be purchased for all our drop in sessions and Saturday classes. Please contact the office for details.

Outside In Award Winner showcases skills in solo exhibition

Pallant House Gallery is delighted to announce a new studio exhibition showcasing the colourful and imaginative work of David Jones, Outside In 2009 award winner and contributor to the Community Programme at Pallant House Gallery.

'Xtensions Part 1' is a special solo exhibition awarded to David Jones, **one of six award winners of Outside In 2009**, an Open Art Competition and the main vehicle for the project, set up to bring work by marginalised and outsider artists to a wider public. David has come a long way since winning the competition, dividing his time between selling the Big Issue in Brighton, and working at the gallery to produce work for the exhibition.

As well as his own exhibition, David was also given an artist residency at Pallant House Gallery where he could come and work on pieces for the exhibition.

Although David has always been interested in art, it was only when he was in prison for a year, following years of drug addiction that he picked up art again through the prison art group. Unable to sleep at night, he spent hours drawing and painting which he says was a 'therapeutic tool' for him. After leaving prison, David then went on to sell The Big Issue, which he has now been selling for ten years and got involved in Creative Futures, a Brighton-based project that develops and promotes marginalised artists. It was Creative Futures who entered David's deeply moving work entitled 'In Awe' into the Outside In exhibition, and visitors can see a similar piece inspired by this award winning painting in the forthcoming exhibition.

Xtensions Part 1 is free to the public and runs from 30 August – 2 October 2011

(There will also be a private view on Thursday 1 September at Pallant House Gallery)

Outside In 2012 is now open for submissions. For more information visit www.outsidein.org.uk

***Please note the studio at Pallant House Gallery is sometimes closed for workshops.**

Visitors are advised to phone in advance to guarantee entry



'Thee Chuckle Brothers' by David Jones

Pallant House Gallery launches ground-breaking Outsider Art Competition

Pallant House Gallery presents the launch of **Outside In: 2012**, a unique open-entry arts prize for **Outsider and marginalised artists**. Submissions open on 21 July and remain open until 20 July 2012. Selected works will be showcased in a major exhibition at Pallant House Gallery in Chichester, West Sussex from 27 Oct 2012 – 3 Feb 2013.

Since the early 20th Century, the terms **Art Brut** or **Outsider Art** have been employed to describe those individuals who produce art from the edges of society. "Outside In" was set up by Pallant House Gallery in 2006 to bring the 'outside in', by providing a platform for artists who find it difficult to access the mainstream art world for a variety of reasons such as disability, health, social circumstance or art process. Its' goal is to create a level playing field where access is possible for all who create. The main vehicle for the venture is a biennial open art competition, which this year will be held across the whole of the UK. Culminating in a major exhibition at Pallant House Gallery and accompanying regional exhibitions in 2013, the competition also offers a series of awards and an opportunity to have a solo exhibition at Pallant House Gallery.

Alongside there are a number of related opportunities including a London-based competition; **STEP UP**, a programme for training marginalised artists to lead workshops and research into the history and legacy of 'Outsider Art; and a dedicated website with online gallery.

Outside In 2012: The National competition

Set up in 2006, the competition was originally open solely to artists living in Sussex before widening in 2009 to include the rest of the South of England. This year sees the competition open to artists from across the whole of England for the first time. Entry to the competition is free and is open to artists across the UK. Submissions open from 22 July 2011 until 20 July 2012 via the Outside In website www.outsidein.org.uk.

Please email outsidein@pallant.org.uk, or call 07735 568531 for more information.

Outside In: The Website

The revamped Outside In website www.outsidein.org.uk launches this year. It aims to provide a vital interactive space for marginalised artists to share their work and thoughts, and acts as an information hub for people interested in this area of work. The online gallery also displays the work that has been exhibited at Pallant House Gallery.

Outside In: Community Gallery

This May Outside In is launched a new community Gallery in Wellington House Day Centre, Brighton. The gallery provides an opportunity for Outside In artists to exhibit as well as the chance to be involved in curating exhibitions. The programme will continue through the year with two more exhibitions that are focused on community. Creative Communities highlights the diverse range of people involved with the Community Programme at Pallant House Gallery. Later in the year the Brighton A5 Open Art Exhibition will give local artists the chance to enter works to show at the gallery.

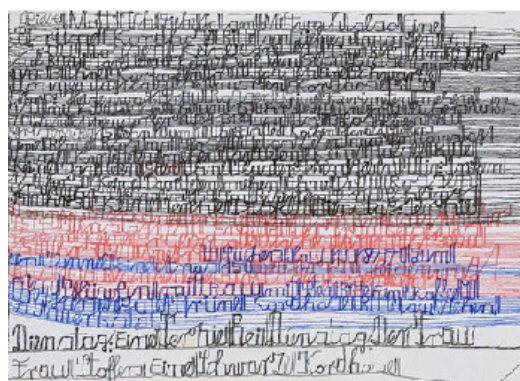
Step Up

Step Up is an innovative project funded through Renaissance and Surrey, East and West Sussex Museums Development Service. It is both a training opportunity for marginalised and outsider artists to lead workshops and a dedicated piece of research into the collections at Pallant House Gallery into the lives, stories, impact and work of outsider and marginalised artists. Based on the success of Step Up in 2009, Step Up 2 was launched in 2010 in order to help people develop skills in leading workshops. Artists that took part had the exciting opportunity of being supported in running workshops at Pallant House Gallery and other venues. This year, Step Up secured funding from the 2012 London Paralympics for the next three years.



Peter Andrews, My Interpretation (2009 award winner)

Action Space presents The Workshops of Everything



Mary Ogunleye hanging her threaded sculptures at the Action Space 'Part of it 2' event at the Southside Shopping centre, Wandsworth, May 2011. Credit: Charlotte Hollinshead

[Action Space](#) has teamed up with [The Museum of Everything](#) as part of its latest show, Exhibition #4, which will show the talents of 50 self-taught disabled artists in one of the UK's iconic department stores.

On 2 September 2011, Exhibition #4 opens at Selfridges in London, where artists' work will be displayed across the store's windows on Oxford Street and in the Ultralounge, where hundreds of thousands of people will be able to discover new artists and their work.

As London's largest provider of visual arts projects for learning disabled people, Action Space will deliver The Workshops of Everything alongside the exhibition. These events will be open to all learning disabled artists that are interested in creating their own art work in a supportive atmosphere. [Cass Arts](#) is supporting the workshops and will be providing materials and art supplies for participants.

Angus Anderson, Chair of Action Space said: "We are thrilled to have the opportunity to work with The Museum of Everything on this very exciting project. It will show the world how exceptionally talented learning disabled people can be. It also provides us with a wonderful opportunity to demonstrate how the magic space that is 'Action Space' enables learning disabled artists to play their part in the ongoing development of visual arts in Britain today.'

Action Space is an Arts Council [Regularly funded organisation](#) and is supported for its important role of giving learning disabled adults and young people access to studio facilities, quality art materials and equipment, and guidance and support from professional artist facilitators. This allows individuals to pursue their own ideas, interests and creative development in a supportive environment.

The organisation has studios at [Cockpit Arts](#) in Holborn and at [Studio Voltaire](#) in Clapham, and runs programmes with partner organisations across the capital, as well as helping artists to promote and sell their work.

Action Space artist, Mary Ogunleye will be one of the artists featured in the Selfridges show. Mary has been working at the Action Space studio at Studio Voltaire in Clapham for two and a half years, and has developed a style of 'threaded sculptures' combining foam and fabric, condensing the materials to create exceptionally playful and repetitive works of art. Her untitled installation will be on display until 25th October.

For more information about Action Space and its work you can visit its [website](#).

The Museum of Everything's Exhibition #4 runs from 2nd September 2011 until 25th October 2011 at Selfridges on Oxford Street. For more information visit [The Museum of Everything website](#).

The Workshops of Everything will be happening every Monday from 5th September - 24th October. These events are not intended for professional artists, and places will be available on a first-come-first-served basis. You can sign up for them [here](#) or by emailing we@musevery.com.

The Workshops of Everything (cont..)

From 2nd September to 25th October Britain's most talked about contemporary art project takes over Selfridges London with its fourth and most ambitious project yet

The Museum of Everything, Britain's most successful new museum returns to London with its most ambitious show yet.

Exhibition #4 is Britain's first survey of progressive studios for self-taught artists with developmental disabilities. The private worlds of fifty world-class artists will be revealed in the show, which is taking place from 2nd September to 25th October 2011.

The venue is Selfridges, London's premiere department store. The Museum of Everything will occupy all the windows, the Ultralounge exhibition space, plus The Shop of Everything in the Wonder Room, with profits benefitting the museum and the artists in the show.

The Workshops of Everything invites you to join the show In conjunction with Exhibition #4, The Museum of Everything is launching The Workshops of Everything: an initiative to highlight the essential role of studios for self-taught artists with developmental and other disabilities.

Progressive art studios are unique places which make art, not therapy. They give artists the freedom to express themselves however they wish, by offering support, space, time and materials.

Progressive studios exist around the world, especially America, Japan, Belgium and Germany. They are still emerging in Britain and mainland Europe and the aim of The Workshops of Everything is to encourage greater development and raise awareness of what they do.

Hosted by Action Space - London's leading arts organisation for people with learning disabilities - The Museum of Everything will hold a series of weekly art workshops in September/October 2011. The workshops are completely free and open to all adults with developmental or other disabilities.

The Workshops of Everything is not open to professional artists. Participants should have some kind of art experience, whether at home or as part of a wider art-making group. We have an open-door policy and selections are made on a first come first served basis. The Workshops of Everything has been kindly sponsored by Cass Arts, who are providing all the materials and art supplies.

For more details about The Museum of Everything please go to www.musevery.com and click on WORKSHOPS - or to apply on behalf of yourself or someone else, just email us at: we@musevery.com.

Exhibition #4 is the first time that art will be shown from contemporary studios for artists with developmental disabilities. Creations range from intimate works on paper to giant three dimensional sculptures. The Museum of Everything will also host a Frieze week retrospective of American sculptor, Judith Scott. This is the first time many of these unintentional artists have been seen in Britain. The Museum of Everything invites the public to discover the work for themselves and ask why these invisible artists remain overlooked by every gallery and museum in the land.

Exhibition #1 opened in London, featuring 500 works plus essays by Grayson Perry, Hans Ulrich Obrist, Maurizio Cattelan, Paula Rego, Nick Cave and more. The show was voted Best of 2009 in Time Out and Art Forum and travelled to the Agnelli Museum in Italy.

Exhibition #2 at Tate Modern featured over 200 unknown works by self-taught British artists, selected by a panel of artists and curators, including Ron Arad, Iwona Blazwick and Jarvis Cocker.

Exhibition #3 features a vast installation of self-taught art and ephemera co-curated with artist Sir Peter Blake, including a recreation of Walter Potter's The Museum of Curiosity. The show and accompanying book were voted Best of 2010 by The Spectator.

The Museum of Everything

Exhibition #4 | 9:30am until 7:00pm | 2nd September 2011 until 25th October 2011

Selfridges & Co, 400 Oxford Street, London W1A 1AB

web www.musevery.com

Invitation to the 2x2 Forum for Outsider Art / 6th – 9th of October / Münster (Germany)

Kunsthaus Kannen



zwei/mal/zwei

FORUM
OUTSIDER ART

INTERNATIONAL SYMPOSIUM
FOR ATELIERS AND ARTISTS
IN MÜNSTER / GERMANY
EINE EUROPÄISCHE PLATTFORM FÜR
OUTSIDER ART IN MÜNSTER / NRW 2011

06–09
OCTOBER
2011



Artists, art lovers, gallery owners and curators are gathering for four days at the Kunsthaus to enter a dialogue and to exchange their ideas. Various lectures will focus on the work and practice of disabled or mentally ill artists and give an overview of Outsider Art from all over Europe.

Art Fair/Lectures/Networking

The 2x2 forum is held as part of the „Outsider Art Past Forward“-project together with partners from Belgium, Denmark and Finland sponsored by the EU Culture programme. Additional funding by the state of North Rhine-Westphalia is also being considered.

Outsider Art Past Forward is a joint project and part of the EU Culture programme

Contributors of the EU-project:

- Gaia Museum in Randers, Denmark
- Museum Dr. Guislain in Gent, Belgium
- Union for Rural Culture and Education in Helsinki, Finland.
- Kunsthaus Kannen in Münster, Germany

2x2 Forum for Outsider Art

A European platform for Art Studios and Artists in Münster/NRW

06th – 09th of OCTOBER 2011

Opening: Thursday 11am at Kunsthaus Kannen

Exhibition: Thursday till Sunday from 11am – 5pm

Between the 6th and the 9th of October, 22 studios from different parts of Europe will come together at the Kunsthaus Kannen in Münster to display their work, answer questions and be ready to take part in discussions and stimulating dialogue. The exhibition hall at Kunsthaus Kannen will be filled compactly and diversely with the presentation areas being clearly demarcated for each individual studio.

The workplace for artistically active mentally ill patients, which had been previously set up by the Austrian psychiatrist Leo Navratil (established in the 1980's), has made a name for itself and has gained international recognition as the Art/Brut Centre Gugging.

The 2x2 forum is held as a joint project and part of the “Outsider Art Past Forward” sponsored by the EU Culture programme and the city of Münster.

Further information

The conference language is English. Additional details regarding the cost, programme etc. will shortly be made accessible at our homepage www.kunsthaus-kannen.de

If you have questions regarding the Forum please contact us.

KUNSTHAUS KANNEN

Museum für Outsider Art und Art Brut

Alexianerweg 9

48163 Münster

Fon + 49 2501 966 20560

Fax + 49 2501 966 20561

KUNSTHAUS-KANNEN@ALEXIANER.DE